



MAPLE LEAF  
CIRCUIT FINALS  
**R O D E O**  
20  25



## Contestant's Package 2025

### Welcome to Agribition's Maple Leaf Circuit Finals Rodeo!

Canadian Western Agribition (CWA) is pleased and excited to host the Maple Leaf Circuit Finals. Congratulations on your achievements making these finals. This contestant package will give you the information needed to assist you with your arrival and during your stay. Please take the time to read the information thoroughly.

In this package you will find the following information:

1. CWA Ground Rules
2. Hotel Information
3. Arrival information and map for Timed Event horses
4. Offsite trailer park map
5. Brandt Centre Maps
6. Feed and Bedding

If you have any questions regarding arrival and stalling, please contact the Barn Boss, Gary Milton 1-306-529-9890, any other questions direct to myself, Kylie Beck, 306-436-7738.

Thank you, see everyone in a couple of weeks!

Kylie Beck  
Director of Livestock & Rodeo, Canadian Western Agribition



## AGRIBITION - GROUND RULES - **CWA ground rules will supersede C.P.R.A. rules**

### **ACCREDITATION**

- CPRA membership cards will be used as your accreditation. You will be required to show your card to gain access to the grounds, the Brandt Centre and lower level of the Brandt Centre. Please always have your membership card with you.
- CPRA companion cards will also be required for access to the grounds and Brandt Centre. Companions will be allowed access to the Cowboy lounge in the lower Brandt Centre, however, not behind the chutes.

### **CONTESTANT MEETING**

- All contestants will be required to attend a contestants meeting held at **4:00 PM, Wednesday, November 26<sup>th</sup>** in the Partner Lounge, lower Brandt Centre.

### **MEDIA and PROMOTIONS**

- Contestants may be scheduled for volunteer media, sponsor or rodeo opening appearances during your stay. **New for 2025: Autograph signings will take place at the Brandt Centre Concourse at 2:30pm-3:30pm daily (Wednesday Nov 26-Saturday Nov 29) and you may be asked to attend for promotional benefit. We ask for your cooperation with the above media and promotions.**
- **Only one horse per contestant will be allowed a stall, except for one hazing horse per steer wrestler.**
- Canadian Western Agribition is pleased to announce that timed event contestants will not be required to pay stall fees for 2025 all we ask that you fork/clean your stall out prior to departure.
- Contestants refer to the enclosed map for arrival plans.
- When unloading trailers into the barns at CWA please try to be quick and efficient as the driving lanes tend to get backed up for arrivals. Tack trucks are available to assist with unloading and delivering tack.
- Horses may arrive after 8:00 PM on Tuesday, November 25<sup>th</sup> & between 8:00 AM - 3:00 PM on Wednesday, November 26<sup>th</sup>. **NOTE: Access area will be closed to traffic from 5:30 PM – 8:00 PM daily for cattle tie outs. If you arrive prior to 8:00 AM Wednesday, November 26<sup>th</sup> contact Barn Boss, Gary Milton at 306-529-9890 or Kylie Beck at 306-436-7738**
- Arrival deadline is 3:00 PM Wednesday, November 26<sup>th</sup> to allow time to take trailers to the off-site trailer parking and return for registration and contestant meeting.

- Horses will be stalled in the Ag-Ex Pavilion and ITC Hall C and entrance is off Princess Street. **Please refer to the arrival map.** Gary Milton (1.306.529.9890) is the Rodeo Barn Boss contact him with any questions.
- **Tie Down Contestants** – Tying of calves on CWA grounds at any time will not be allowed.
- **Chute Procedure:** From the time the Chute Boss or Head Judge signals a rider that they may attempt their ride attempt, they must swiftly complete the process of mounting the bull, warming up and pulling their rope, and nodding their head to initiate the chute gate opening. A rider will be allotted up to ninety (90) seconds to complete this process. The Chute Judges shall have full discretion to pause anytime within ninety (90) seconds if the bull is not in a position to allow the rider to initiate the ride. The Chute Judge will continue from the point the process was paused when they determine the bull has settled. Should ninety (90) seconds expire without the Rider nodding for the bull, then the Chute Judge will determine whether to award a Re-Ride or a Ride Disqualification.
- **Going on the Clock-** If the Back Judge determined that a Rider is not making a fair and honest effort to complete the Chute Procedure. Regardless of whether ninety (90) seconds has transpired, the Back Judge may give the Rider a verbal warning of being put On the Clock and initiate the 30-Second Chute Clock. Once the 30-Second Chute Clock is initiated, the rider must call for the bull within thirty (30) seconds, regardless of the bull's behavior, or they will be Disqualified. Once the 30- Second Chute Clock is initiated it cannot be stopped/delayed by a Judge. The Back Judges shall have complete discretion regarding the fairness of opportunity for a Rider's ride attempt and all other Chute Procedure matters unless there is a review subject to automatic review by the Replay Judge.
- Horses are not allowed to be tied or left unattended in the lower Brandt Centre.
- **Veterinary Services** –1-306-924-9754.

### **ARENA TIME**

CWA will make every effort to allow Contestants time in the arena prior to the performances. Once the day's events are complete (approx. 5:00 PM) Contestants may use the arena for ½ hour or until asked to leave. PLEASE be certain to check with the Arena Supervisor (Scott Schweiger) prior to bringing your horse down. Arena time following each performance will be allowed for approximately 1 hour.

## HOTEL ROOMS

We recognize the difficulty that comes with booking hotels in Regina during Agribition. This year we have partnered with The Hotel Saskatchewan to offer rooms at discounted rates. There are 42 classic king rooms available for \$189.00 CAD/night and 12 Executive King Suites available for \$239.00 CAD/night. Rooms can be booked on a first come first serve basis and can be reserved using the link below **before November 3, 2025**.

### **CWA 2025 Contestants Room Block – New Offering**

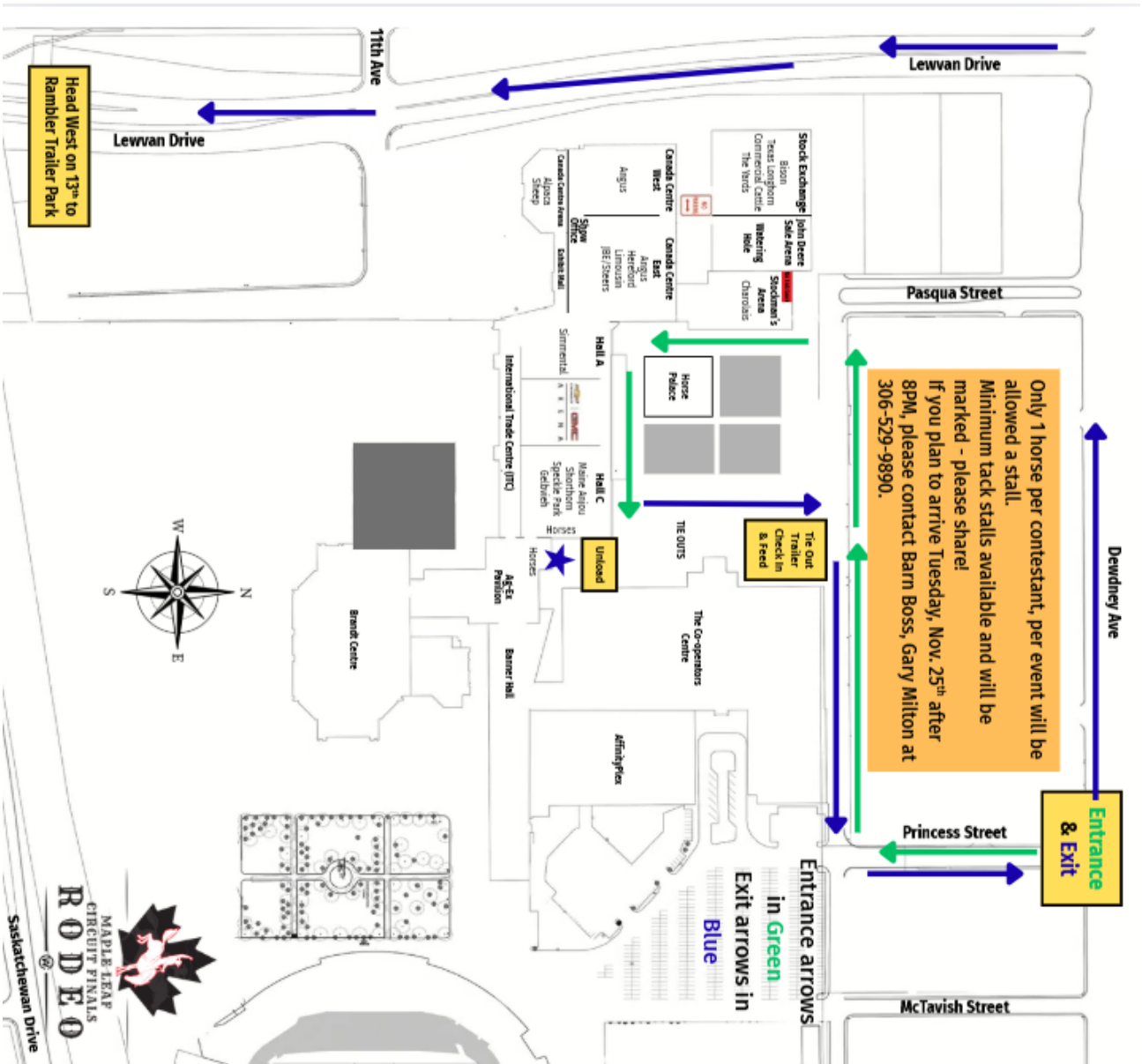
**Start Date: Tuesday, November 25, 2025**

**End Date: Sunday, November 30, 2025**

**Hotel(s) offering your special group rate:**

- **The Hotel Saskatchewan, Autograph Collection for 189.00 CAD - 239.00 CAD per night - Last Day to Book : Monday, November 03, 2025**

**[Book your group rate for CWA 2025 Contestants Room Block](#)**



**MAPLE LEAF CIRCUIT FINALS  
RODEO CONTESTANT ARRIVAL  
ENTRANCE PRINCESS STREET  
ONLY**

**Stalls are located in the Ag-Ex Pavilion & TTC Hall C**

**Arrival Times**  
After 8:00 PM Tuesday, November 25<sup>th</sup> or 8:00 AM - 3:00 PM Wednesday, November 26<sup>th</sup>  
Contestant meeting 4:00 PM

Please leave plenty of time for arrivals.  
Horses must be out of the barns by 8:00 AM Sunday, November 30<sup>th</sup>

**Please clean stalls prior to departure.**

We encourage exhibitors to utilize  
**CWA COURTESY  
TACK TRUCK SERVICE  
Phone: 306-551-2745**

All trailers must be parked at Rambler Park. See trailer park map for directions. Trailers not parked in CWA allocated areas at Rambler Park will be towed at the exhibitor's expense.  
**If you have any questions upon arrival, please contact:**  
Gary Milton: 306-529-9890  
Please Note:  
**Tie-out area will be closed 6:30 AM - 8:00 AM and 5:30 PM - 7:30 PM daily.**  
Parking will not be allowed in the tie-out area at any time during the show.



CANADIAN WESTERN  
**AGRIBITION**

## Trailer Parking Map

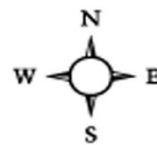
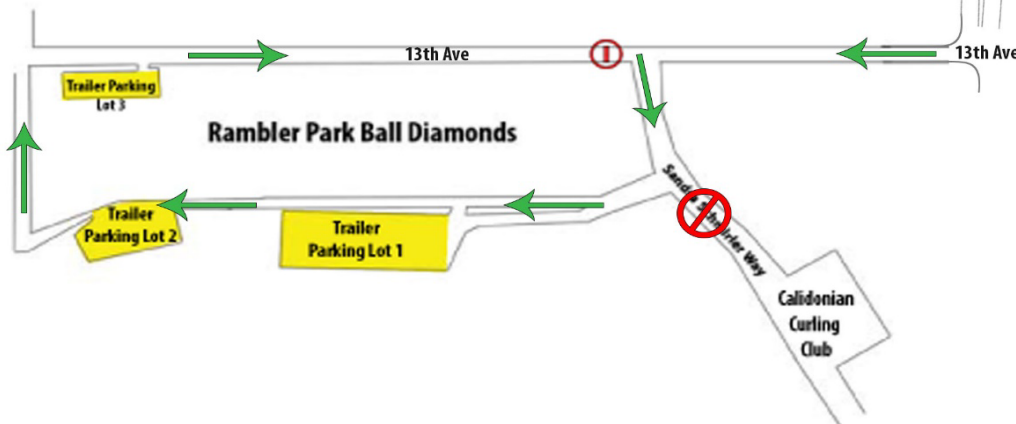
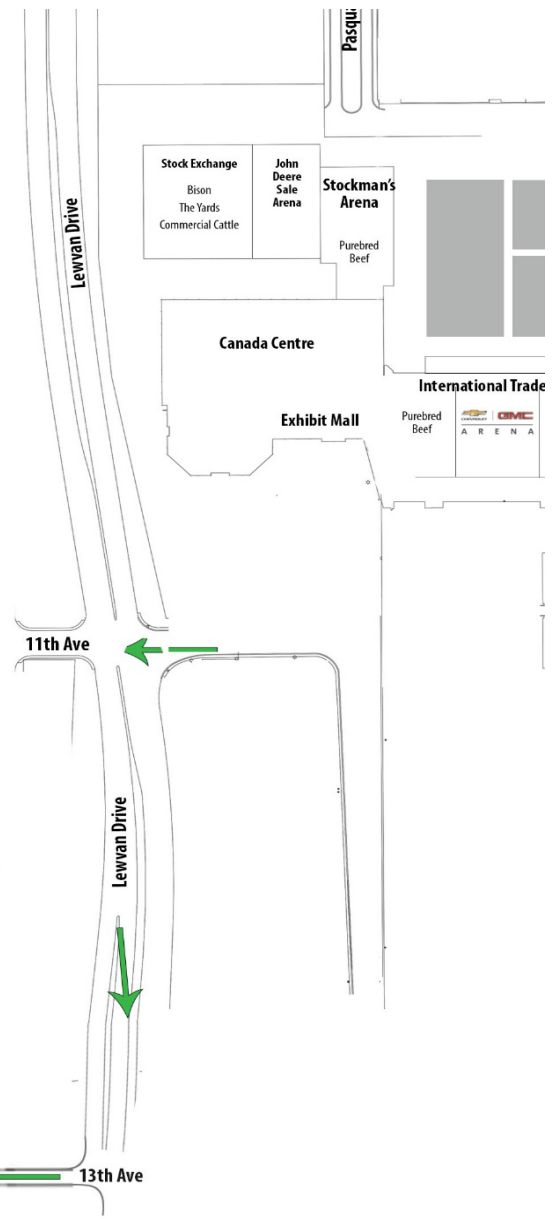
- South on Lewvan, past overpass
- Right on 13th Avenue
- Left on Sandra Schmirler Way
- First right to parking lot

### PLEASE NOTE

Exhibitors and Contestants:

Please park trailers in highlighted areas only.  
Trailers parked in unmarked lots will be towed at exhibitor's/contestant's expense.

Thank you!





## **HAY AMIGOS**

### **HAY & STRAW, 2025 PRICES**

- No pre-orders
- Set up accounts at tie-out office upon arrival
- Credit Card or cash down required to set up account
  
- **OFFICE HOURS:**
  - Friday, November 21 – Sunday, November 23
    - All Day
  - Monday, November 24 – Friday, November 28
    - 8:00 am – 8:00 pm
  - Saturday, November 29
    - 8:00 am – 5:00 pm
  
- **PRICE LIST:**
  - Square Hay bale: **\$13.00/bale**
  - Square Straw bale: **\$6.00/bale**
  - Bedding: **\$6.50/head/day**
  
- Accounts must be paid by 5:00 pm, Saturday, November 29 or credit cards will be charged. All credit card purchases will include a 3.5% administration fee.

#### Contact:

- Brittany Mitchell 306-421-8325
- Garrett Mitchell 306-690-1180